

**RETAIL FOR LEASE**

# 197 Avenue B

**between 12th Street  
and 13th Street**

## **SIZE**

GF: Approx. 900 SF

## **COMMENTS**

- Previously a florist
- Water hookup throughout
- Includes separate storage area
- ADA Compliant
- Perfect for learning center or fitness
- Most uses considered

## **NEIGHBORS**

Stuyvesant Town, Target,  
Whole Foods (2025), Hi-  
Note, AMA Raw Bar

## **ASKING RENT**

Upon Request





**RETAIL FOR LEASE**

# 197 Avenue B

**between 12th Street  
and 13th Street**

## **SIZE**

GF: Approx. 900 SF

## **COMMENTS**

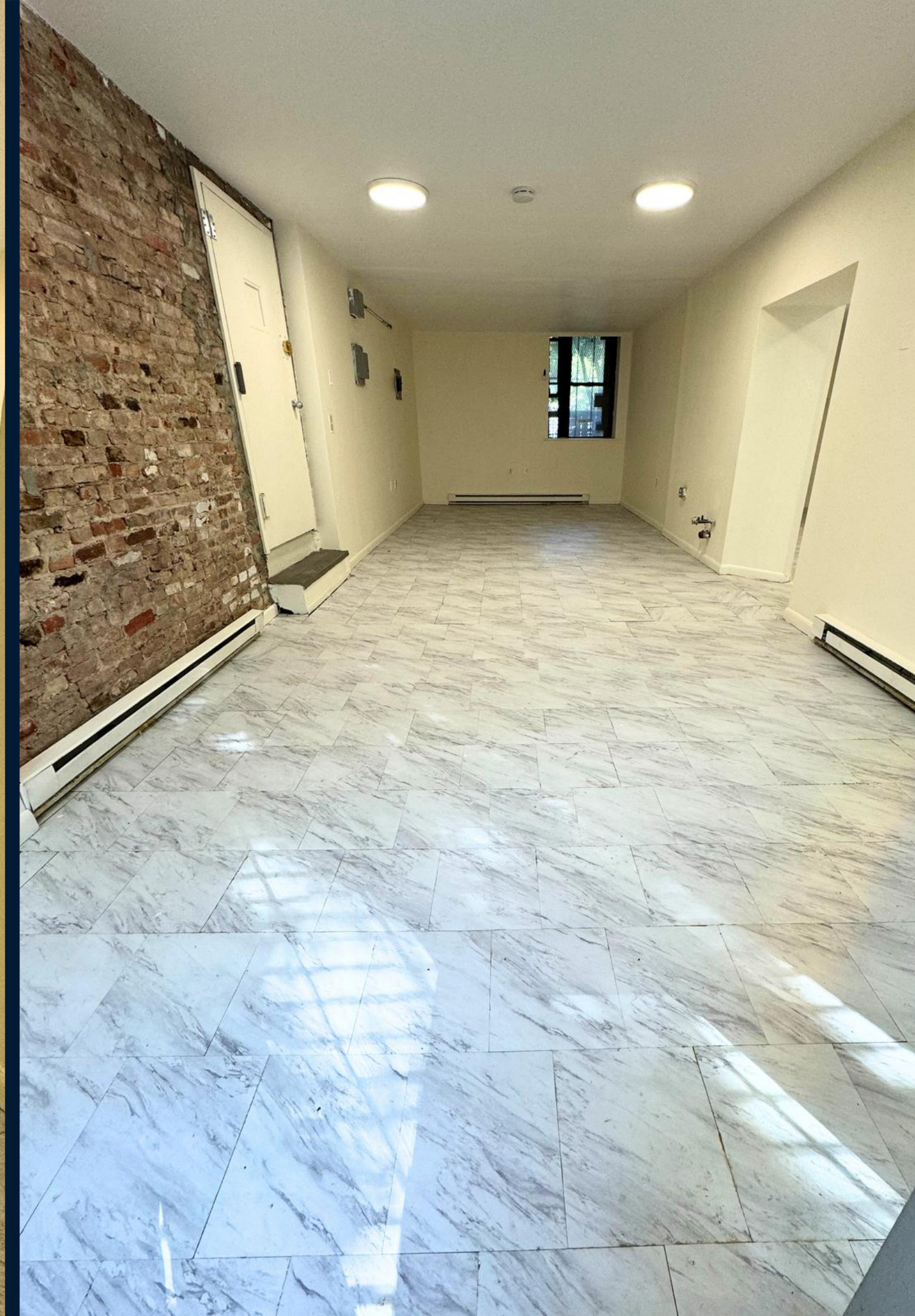
- Previously a florist
- Water hookup throughout
- Includes separate storage area
- ADA Compliant
- Perfect for learning center or fitness
- Most uses considered

## **NEIGHBORS**

Stuyvesant Town, Target,  
Whole Foods (2025), Hi-  
Note, AMA Raw Bar

## **ASKING RENT**

Upon Request





**RETAIL FOR LEASE**

# 197 Avenue B

**between 12th Street  
and 13th Street**

## **SIZE**

GF: Approx. 900 SF

## **COMMENTS**

- Previously a florist
- Water hookup throughout
- Includes separate storage area
- ADA Compliant
- Perfect for learning center or fitness
- Most uses considered

## **NEIGHBORS**

Stuyvesant Town, Target,  
Whole Foods (2025), Hi-  
Note, AMA Raw Bar

## **ASKING RENT**

Upon Request

**CONTACT FOR SHOWINGS AND ADDITIONAL INFORMATION:**

### **HAZ ALIESSA**

212.673.7333 X 107

[haz@towerbrokerage.com](mailto:haz@towerbrokerage.com)

### **PAUL MCQUADE**

212.673.7333 X 112

[pmcquade@towerbrokerage.com](mailto:pmcquade@towerbrokerage.com)

