



621-625 WEST 46TH STREET

LOCATED RIGHT OFF THE WEST SIDE HIGHWAY (12TH AVE)

Retail Space For Lease

GROUND FLOOR | 3,800 SF + 2X Garage Bays MEZZANINE | 2,500 SF

ASKING RENT

Upon Request

DETAILS

Optimal location off the West Side Highway
Tremendous ceiling height
Temperature controlled w/ average freight clearance

TRANSPORTATION

A C E 42nd Street-Port Authority | 82M riders annually

YOUR NEIGHBORS



CLICK HERE

FOR MATTERPORT LINK

(212) 673-7333

341 East 10th Street, New York, NY 10009



TOWER
BROKERAGE

621-625 WEST 46TH STREET

LOCATED RIGHT OFF THE WEST SIDE HIGHWAY (12TH AVE)

Exterior



(212) 673-7333

341 East 10th Street, New York, NY 10009

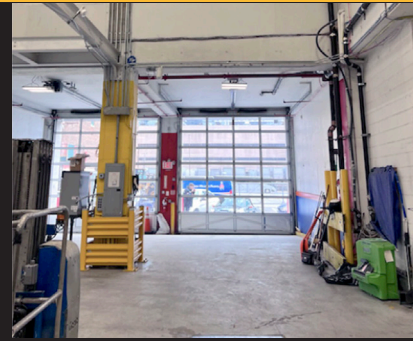


TOWER
BROKERAGE

621-625 WEST 46TH STREET

LOCATED RIGHT OFF OFF THE WEST SIDE HIGHWAY (12TH AVE)

Interior | Ground Floor



(212) 673-7333

341 East 10th Street, New York, NY 10009

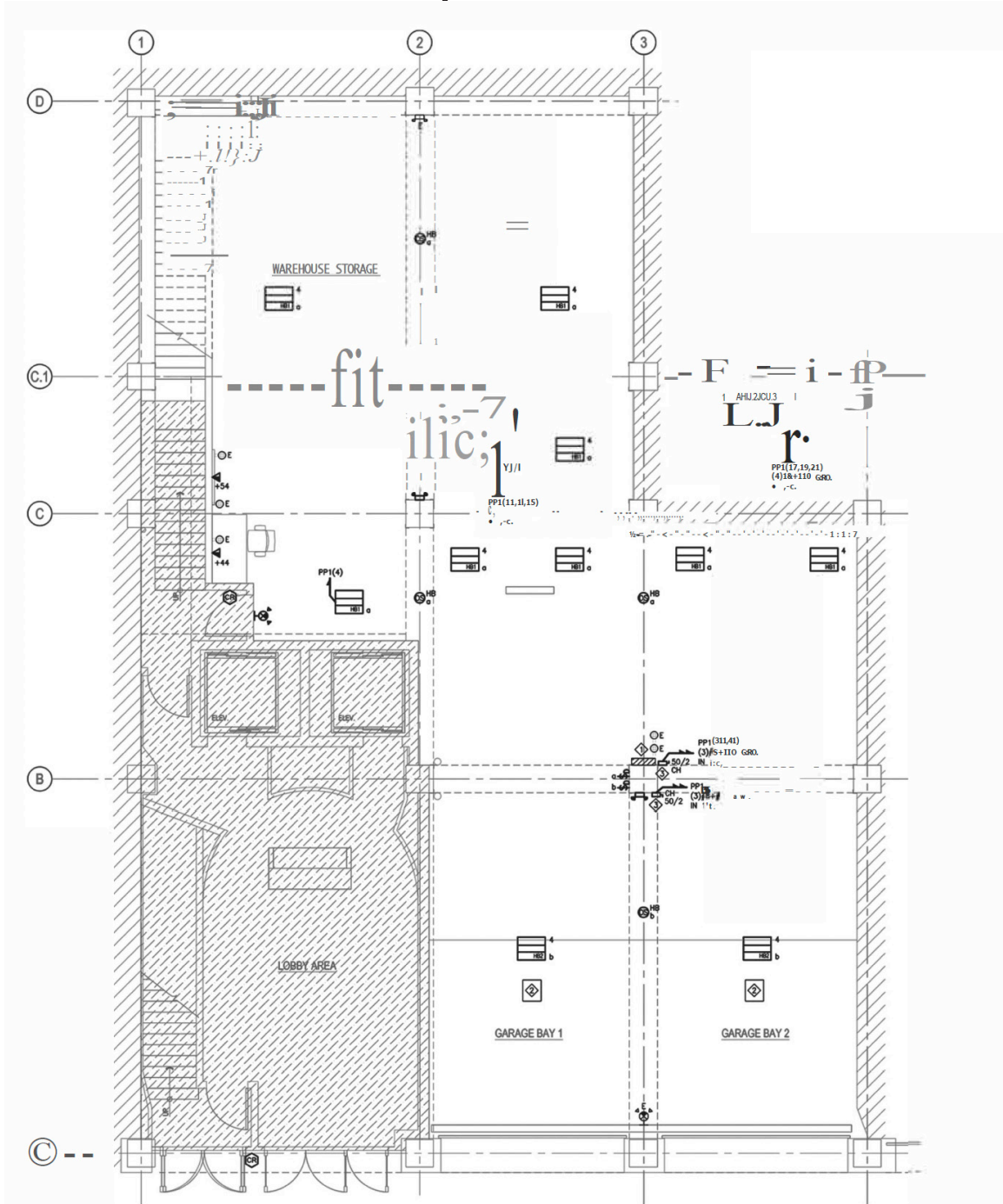


TOWER
BROKERAGE

621-625 WEST 46TH STREET

LOCATED RIGHT OFF THE WEST SIDE HIGHWAY (12TH AVE)

Floor Plan | Ground Floor



(212) 673-7333

341 East 10th Street, New York, NY 10009



TOWER
BROKERAGE

621-625 WEST 46TH STREET

LOCATED RIGHT OFF OFF THE WEST SIDE HIGHWAY (12TH AVE)

Interior | Mezzanine



(212) 673-7333

341 East 10th Street, New York, NY 10009

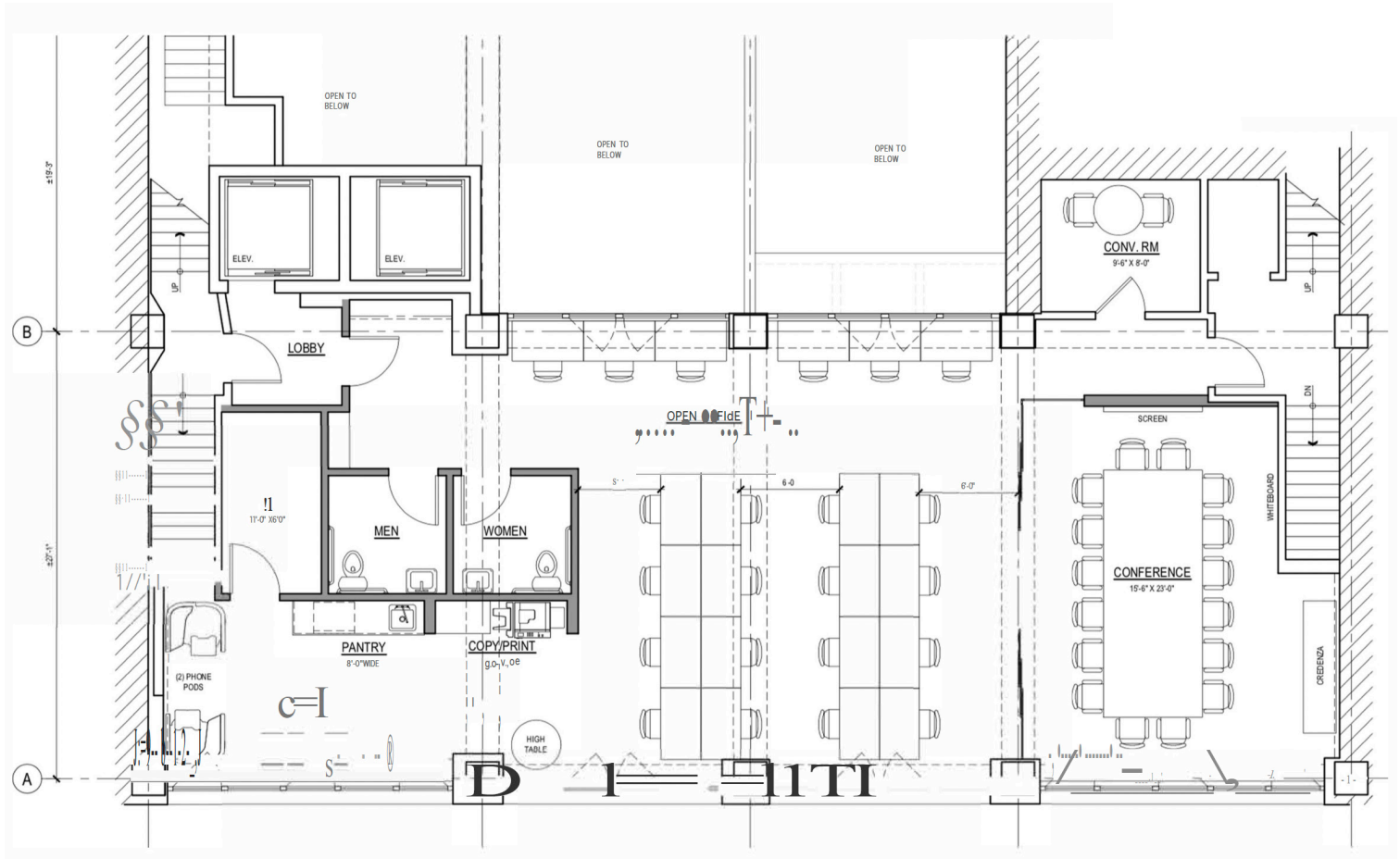


TOWER
BROKERAGE

621-625 WEST 46TH STREET

LOCATED RIGHT OFF OFF THE WEST SIDE HIGHWAY (12TH AVE)

Floor Plan | Mezzanine



(212) 673-7333

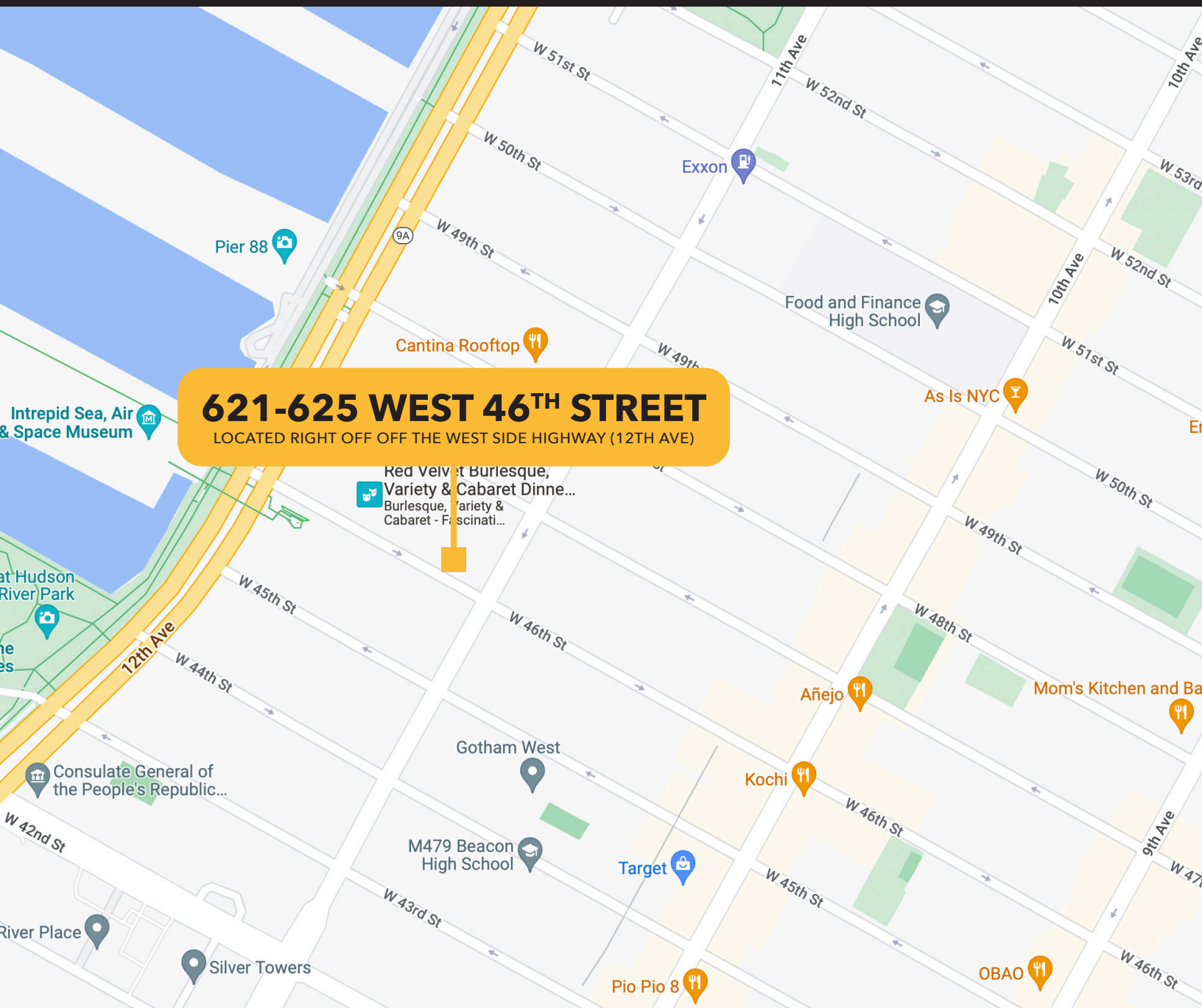
341 East 10th Street, New York, NY 10009



TOWER
BROKERAGE

621-625 WEST 46TH STREET

LOCATED RIGHT OFF OFF THE WEST SIDE HIGHWAY (12TH AVE)



HAZ ALIESSA

212.673.7333 x107

PAUL MCQUADE

212.673.7333 x112

(212) 673-7333

341 East 10th Street, New York, NY 10009



TOWER
BROKERAGE