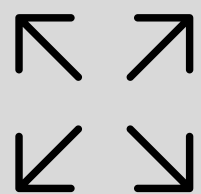


RETAIL FOR LEASE

303 Park Avenue S

Park Avenue S between 23rd & 24th ST



SIZE

GF: 600 SF
Mezz : 265 SF
Basement : 300 SF
Total SF : 1,165 SF



COMMENTS

Previously Verizon
High Visibility Retail On Park Ave S
Across from IBM's New NYC
Corporate Headquarters
All Uses Considered



ASKING RENT

Upon Request



POSSESSION

Immediately



HAZ ALIESSA

212.673.7333 X 107
haz@towerbrokerage.com



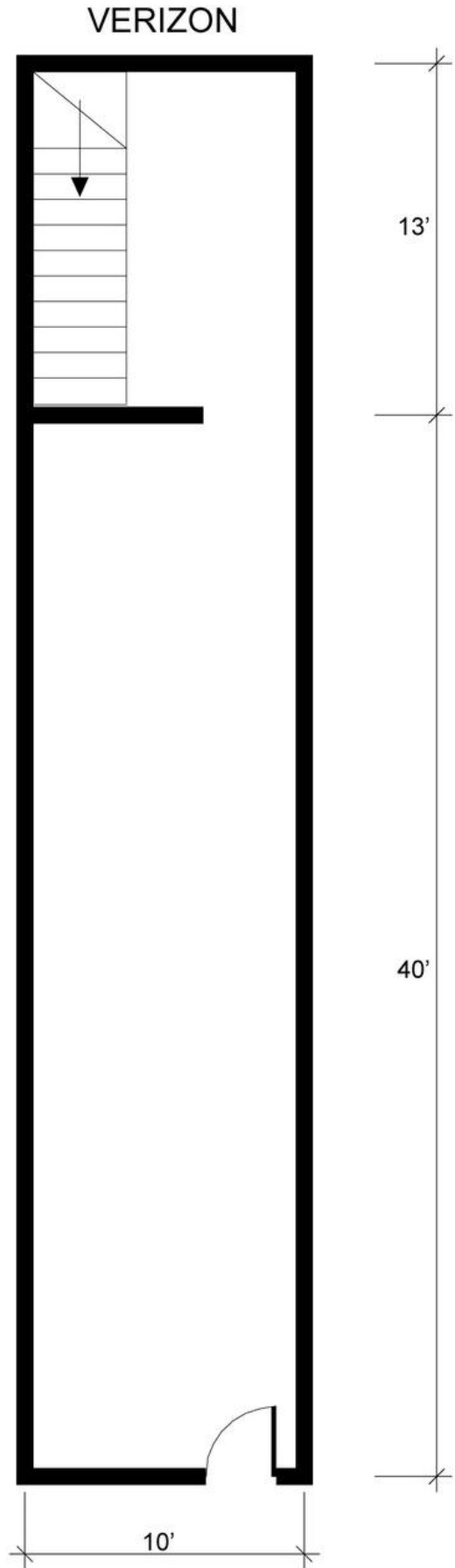
TOWER
BROKERAGE

PAUL MCQUADE

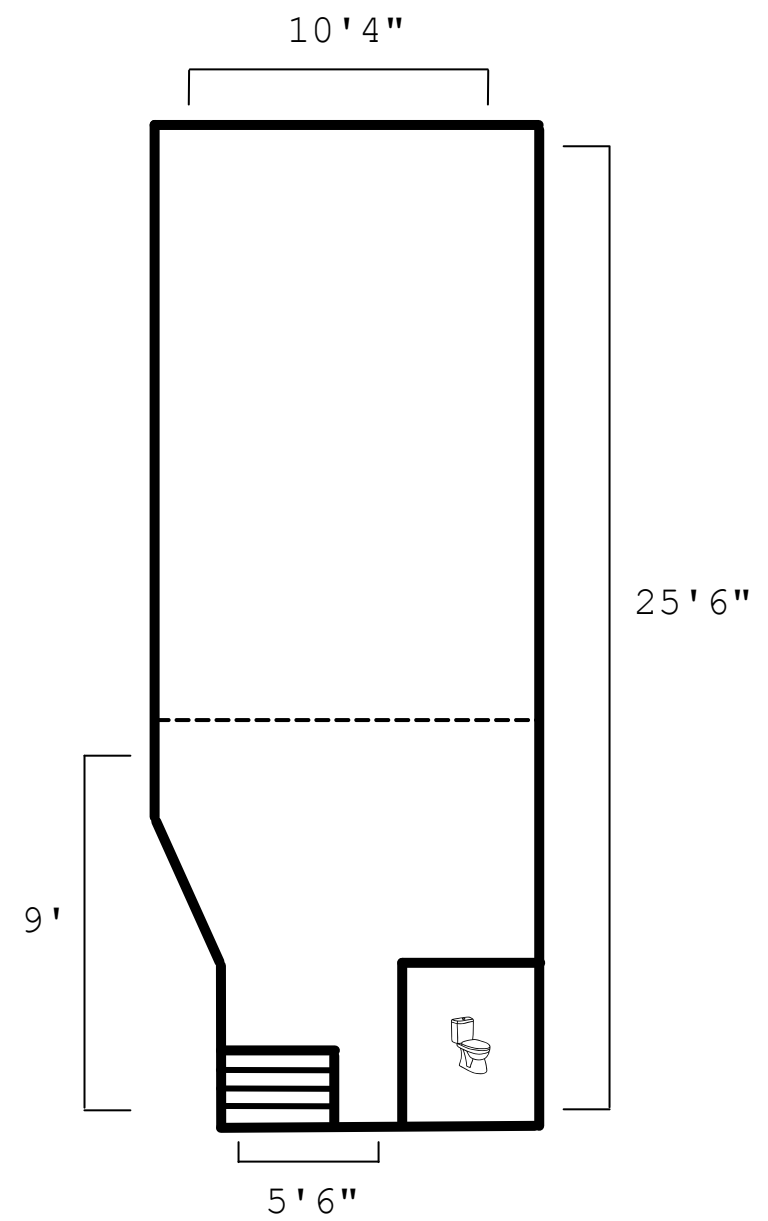
212.673.7333 X 112
pmcquade@towerbrokerage.com

303 Park Ave S Verizon Floor Plans

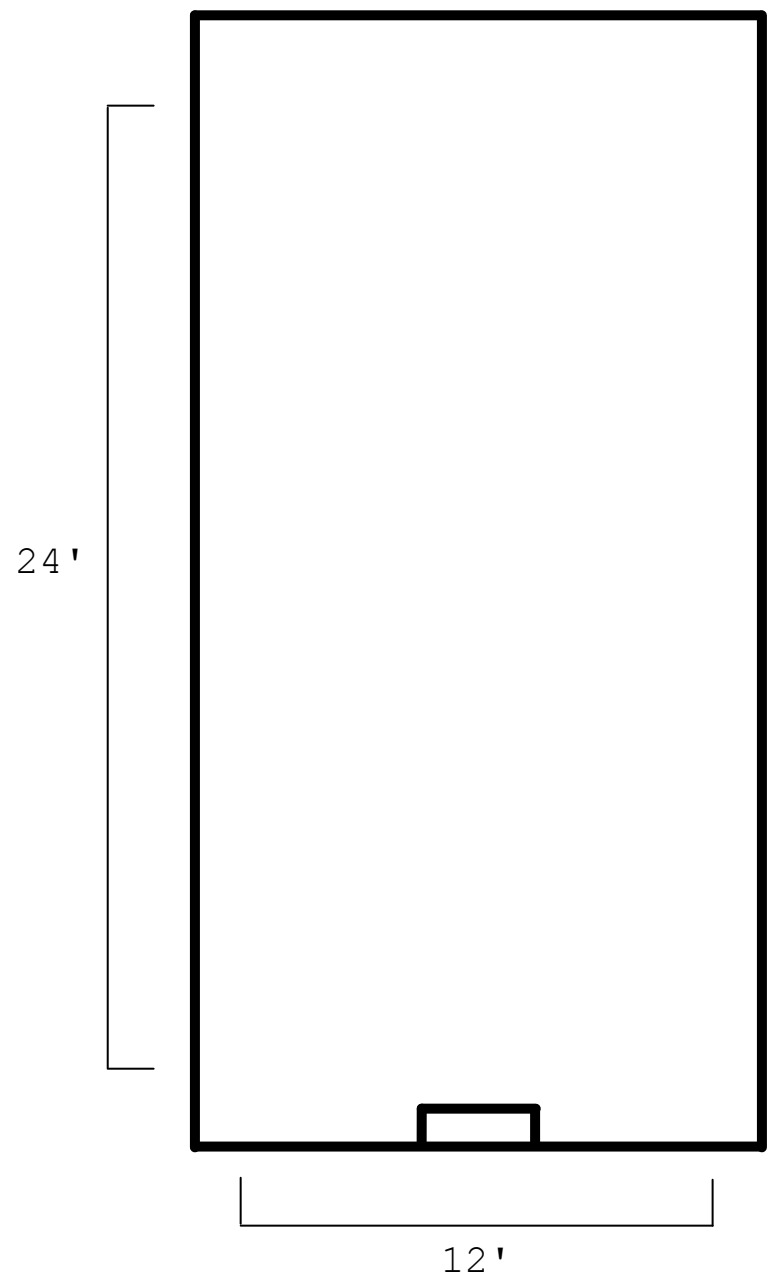
Ground Floor



Mezzanine



Basement



Ground Floor

