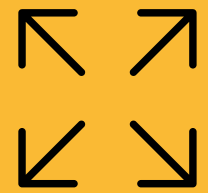


# RETAIL FOR LEASE

# 303

PARK AVENUE SOUTH

CORNER OF 23RD STREET & PARK AVENUE SOUTH



## SIZE

GF : 1,500 SF

Basement : 2,200 SF



## COMMENTS

Previously Pret A Manger

Type 2 Vent

Corner Space

High Traffic Location



## ASKING RENT

Upon Request



## POSSESSION

Immediately



## HAZ ALIESSA

212.673.7333 X 107

haz@towerbrokerage.com



TOWER  
BROKERAGE

## DYLAN CANE

212.673.7333 X 104

dcane@towerbrokerage.com

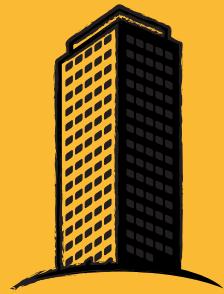
## RETAIL FOR LEASE

# Space Details



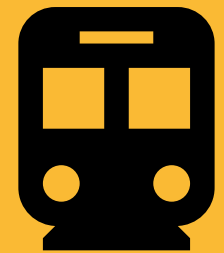
### NEIGHBORS

7-Eleven, Baked by Melissa, Juice Generation, Bank of America and New York Sports Clubs



### DEVELOPMENT

Across From SL Green's 1.4 Million SF "One Madison" Development



### TRANSPORTATION



### DEMOGRAPHICS

Average Daily Traffic 250,000 +  
Average Household income \$188,064



**HAZ ALIESSA**

212.673.7333 X 107  
haz@towerbrokerage.com

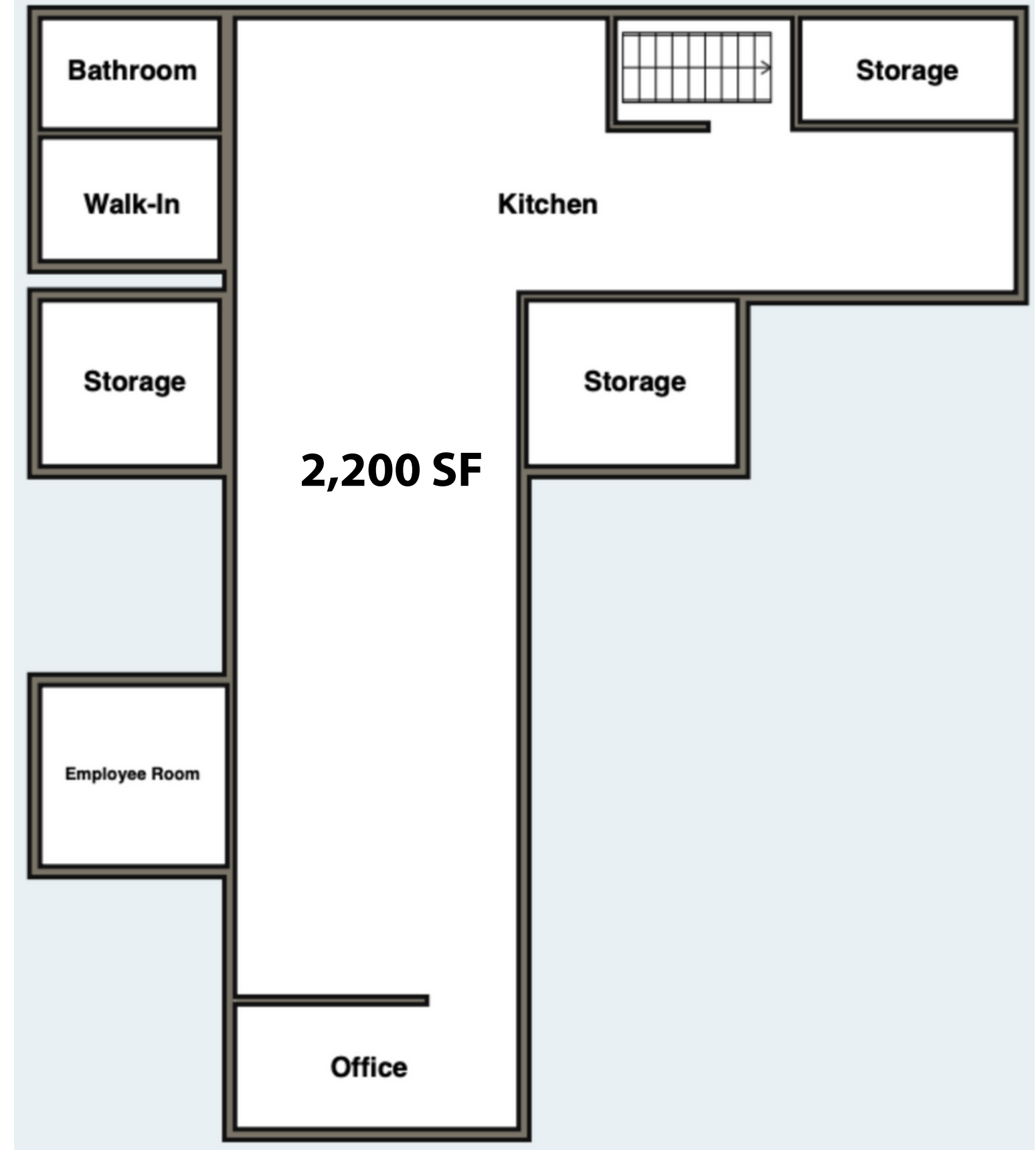
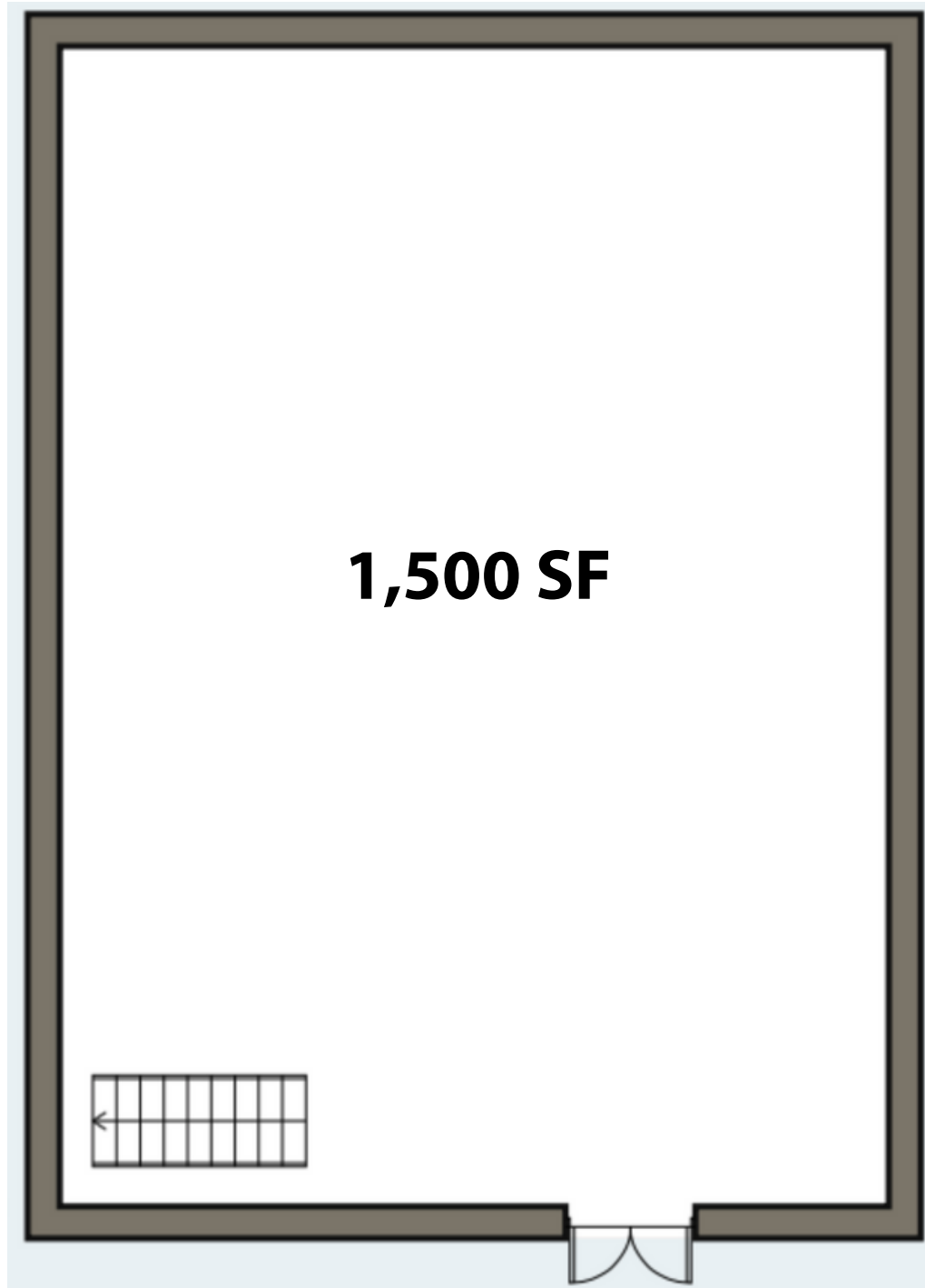


TOWER  
BROKERAGE

**DYLAN CANE**

212.673.7333 X 104  
dcane@towerbrokerage.com

# Floor Plan



# RETAIL MAP

