

# 303

PARK AVENUE SOUTH

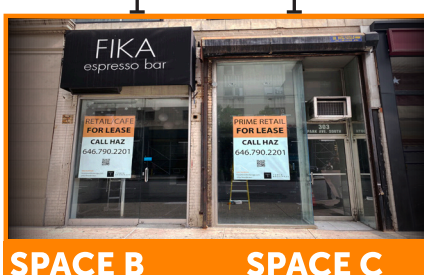
CORNER OF PARK AVENUE SOUTH & 23RD



**SPACE A**

Previously Reviver

**Ground 1,400 SF**  
**Basement 800 SF**



**SPACE B**

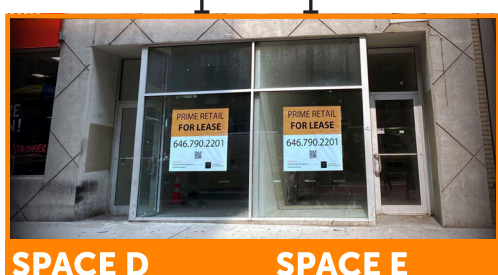
Previously FIKA

**Ground 350 SF**

**SPACE C**

Previously Verizon

**Ground 600 SF**  
**Mezz. 150 SF**



**SPACE D**

Previously portion of NYSC

**Ground 500 SF**  
**Mezz. 300 SF**

**SPACE E**

Previously portion of NYSC

**Ground 500 SF**  
**Mezz. 300 SF**

## PROPERTY INFORMATION

### APPROX. SIZE

#### Ground Floor

Space A (Vented)	1,400 SF + Basement 800 SF
Space B	350 SF
Space C	600 SF + Mezzanine 150 SF
Space D *	500 SF
Space E *	500 SF

\*Spaces D and E are located at 113 East 23rd Street

### NEIGHBORS

Pret A Manger, 7-Eleven, Baked by Melissa, Juice Generation, Bank Of America

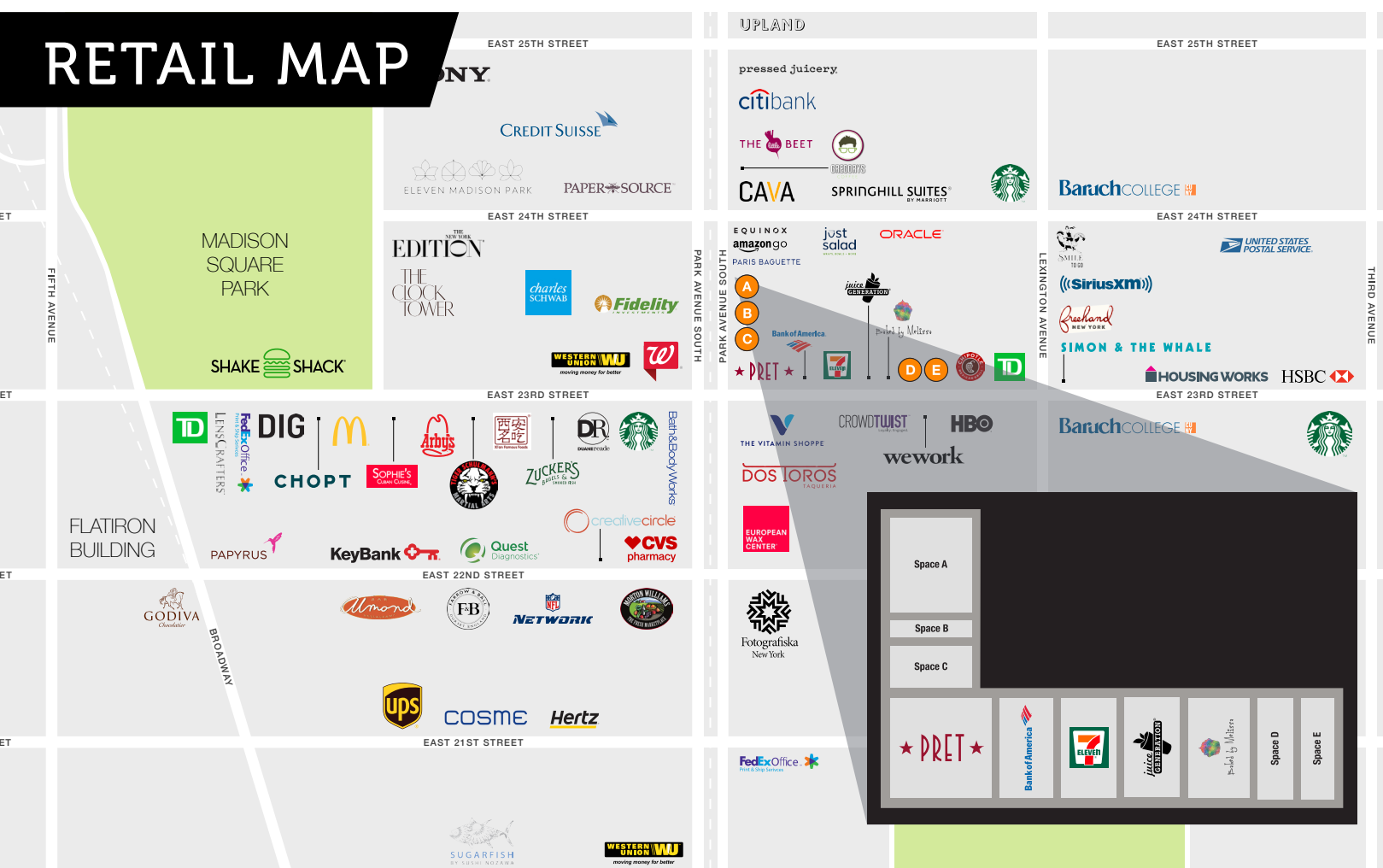
### COMMENTS

- AmazonGo store is now open
- At the intersection of Flatiron & Gramercy in Midtown
- All uses considered

### TRANSPORTATION

6

## RETAIL MAP



# 303

PARK AVENUE SOUTH

CORNER OF PARK AVENUE SOUTH & 23RD

**Haz Aliessa**  
212.673.7333 Ext: 107  
haz@towerbrokerage.com

**Dylan Cane**  
212.673.7333 Ext: 104  
dcane@towerbrokerage.com

**TOWER BROKERAGE**