

303

PARK AVENUE SOUTH

CORNER OF PARK AVENUE SOUTH & 23RD



SPACE A

Previously Reviver

Ground 1,400 SF
Basement 800 SF



SPACE B

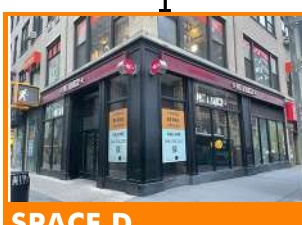
Previously FIKA

Ground 350 SF

SPACE C

Previously Verizon

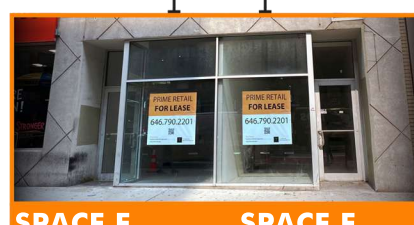
Ground 600 SF
Mezz. 150 SF



SPACE D

Pret A Manger

Ground 1,500 SF
Basement 2,200 SF



SPACE E

Previously portion of NYSC

Ground 500 SF
Mezz. 300 SF

SPACE F

Previously portion of NYSC

Ground 500 SF
Mezz. 300 SF

PROPERTY INFORMATION

APPROX. SIZE

Ground Floor

Space A (Vented)	1,400 SF + Basement 800 SF
Space B	350 SF
Space C	600 SF + Mezzanine 150 SF
Space D	1,500 SF + Basement 2,200 SF
Space E *	500 SF
Space F *	500 SF

*Spaces E and F are located at 113 East 23rd Street

NEIGHBORS

Pret A Manger, 7-Eleven, Baked by Melissa, Juice Generation, Bank Of America

COMMENTS

- AmazonGo store is now open
- At the intersection of Flatiron & Gramercy in Midtown
- All uses considered

TRANSPORTATION

6

RETAIL MAP



303

PARK AVENUE SOUTH

CORNER OF PARK AVENUE SOUTH & 23RD

Haz Aliessa

212.673.7333 Ext: 107

haz@towerbrokerage.com